

Maintaining critical processes in time of COVID-19

Focus on collection and transportation

Francis Swaneveld, Hematologist/Transfusion specialist
Jaap van den Blink, QA officer
October 2020



Sanquin Blood Supply in the Netherlands

- 50 fixed and 86 mobile sites ○
- 2 processing sites ●
- 7 distribution points 📍



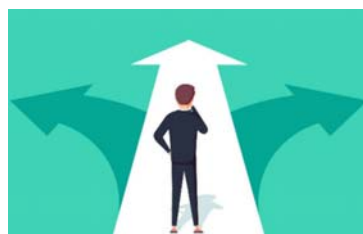
Start of COVID – 19 outbreak in the Netherlands

- February 2020: Risk Analysis for Blood bank
- February 2020: start taskforce and crisis management team Sanquin
- 27th February 2020: first corona patient in the Netherlands
- March 2020 (week 12): start many measures from the government and the taskforce, including intelligent lockdown
- Exchange experiences with international blood organisations

3

Challenges for the blood bank

- Maintaining blood supply
- Donor and staff safety
- Transport (logistics)
- Corona versus QMS
- Convalescent plasma



4

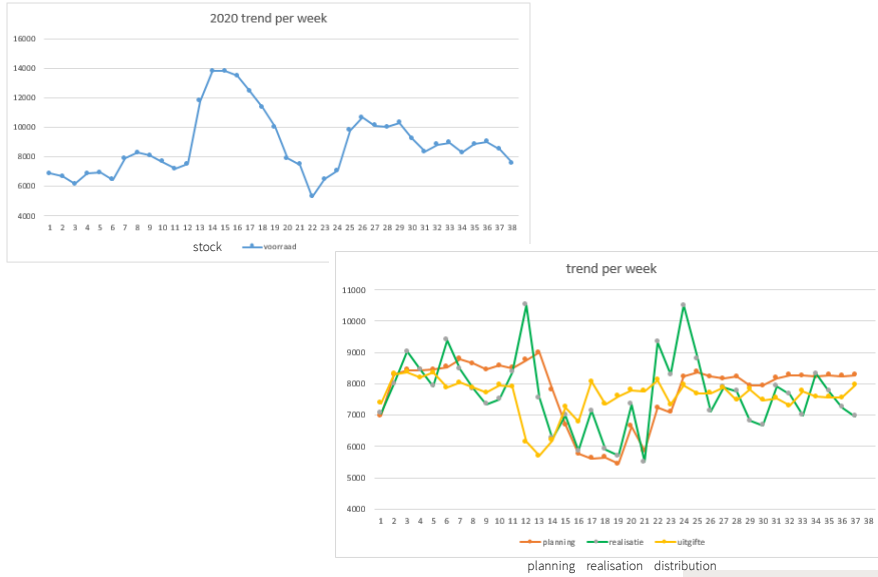
Maintaining blood supply, donor & staff factors

- Intelligent lockdown
- Stringent donor selection criteria
- Anxiety donors
- Public transport
- Attendance donors
- Uncertain blood demands from hospitals
- Sufficient staff
- Social distancing (less beds available)

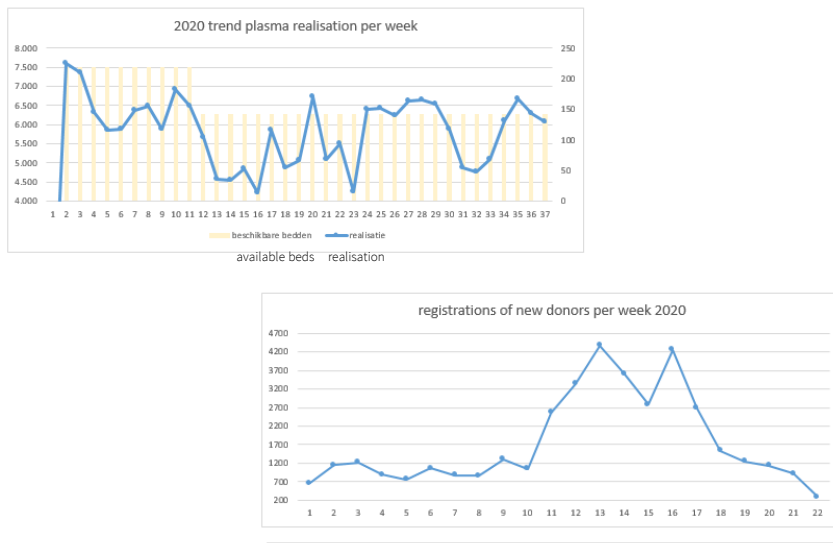
Measures taken

- Media attention
- Daily meetings to manage the stock
- Intensive contacts with the hospitals
- Many safety measures taken
- Deployment of volunteers to relieve staff
- Extra opening hours and weekend opening
- Ongoing check of critical materials in stock

Whole blood



Plasma / new donors



Slide 7

TD4 deze plaatjes zijn heel onduidelijk. zet er een titel boven en geef duidelijk aan in een legenda aan wat de kleurtjes representeren.

Thijssen, Daphne, 08/10/2020

Donor and staff safety

- Triage
- Washing & Desinfection hands
- Screens at the reception desk
- Digital appointment bookings
- 1.5 meter social distancing
- Signage for donors
- Blocking some beds
- No accompanying persons
- Face masks staff
- Extra attention for questions and care of staff
- Extra cleaning rounds
- Corona decision tree for staff

