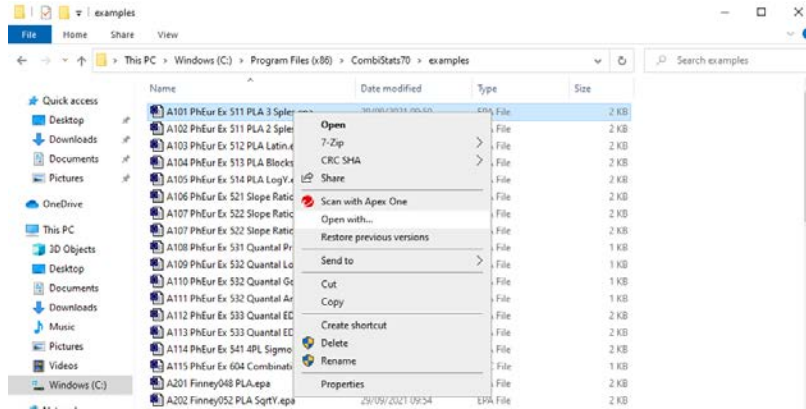
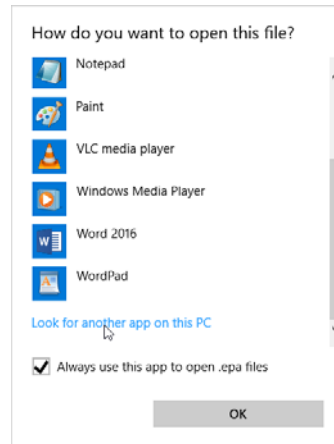
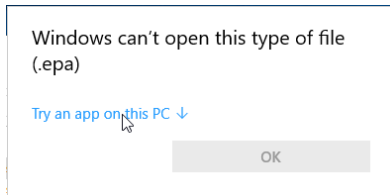


How to associate .epa, .epc and .epm file extensions with CombiStats?

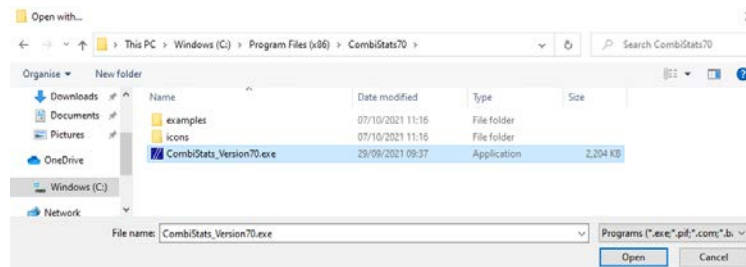
1. Right-click on an .epa file and select **Open with...**



2. Click **Try an app on this PC**
3. Tick **Always use this app to open .epa files**, then scroll down and click **Look for another app on this PC**



4. Navigate to "C:\Program Files (x86)\CombiStats70", select **CombiStats_Version70.exe** and click **Open**



Repeat the procedure for .epc and .epm files, if needed.